



GFG LIGHTING

GFG LIGHTING MANUFACTORY CO.,LTD

格峰格照明电器有限公司



企业简介 Introduction

Professional LED Lighting



PRODUCTION BASE

GFG Lighting Company

GFG照明属于香港杰鑫集团在中国大陆的生产基地，是一家集科研、生产、营销、服务、商贸于一体的专业生产照明电器产品的企业。公司拥有先进的生产设备和雄厚的技术、研发队伍及管理团队。

GFG照明主要以生产金卤灯、LED和射灯为主，在产品开发上屡屡创新，电子、电感、吸顶和导轨式新款金卤灯系列引导了整个行业新的发展潮流，对整个照明行业产生了巨大的影响。该系列产品远销香港、新加坡、美国、意大利、德国、俄罗斯、西班牙、韩国、印度及其它国家。

企业使命：照亮全世界，服务全人类。

企业精神：努力拼搏，更上一层楼。

企业目标：引领潮流，做照明行业的先锋。

经营理念：以市场为导向，追求更多的企业价值，以顾客为导向追求更多的顾客满意。

管理理念：专业化、标准化、规范化。

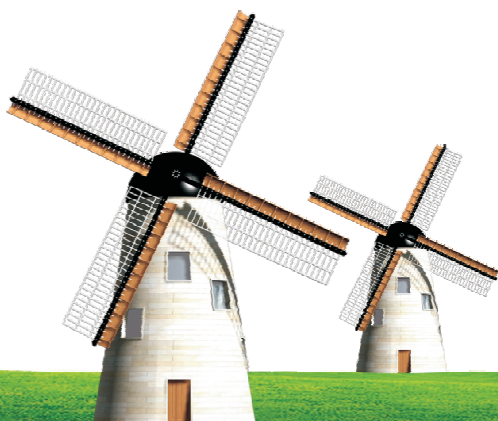
企业哲学：顾客至尊、市场为首、质量为本、人才为源。

经营方针：高品位、做大众潮流生活的缔造者。

GFG LIGHTING is one of the affiliated companies of EPAMS GROUP, located at Baiyun District, very close to New Baiyun Airport and Railway Station with mature highway traffic network, GFG is the professional manufacturer and exporter for different Outdoor Flood Lightings, Indoor Commercial Lightings, Spot Lightings, LED lights and etc.

Our strong R&D and perfect management team enable us to supply the client quality products that meet with up-to-date market requirement. OEM orders are welcome.

We have never changed and will never change our promise: Competitive Price for Quality Product and Quality Service. We always do our best to meet the requirements of our customers. Any inquiries from our customer will get our immediate attention.



目录

Contents



LED PENDANT LIGHT

LED SPOT LIGHT

LED DOWN LIGHT

MORE LIGHT

P₀₁₋₀₂

P₀₃₋₀₅

P₀₆₋₀₈

P₀₉₋₁₅





GF-8A1-LED

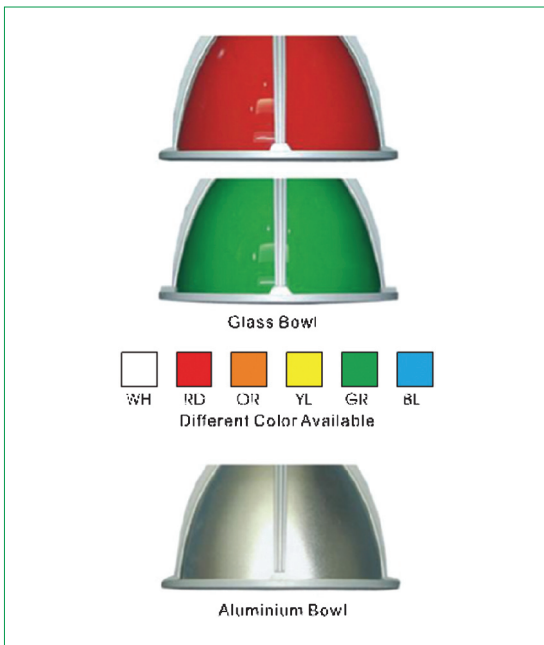
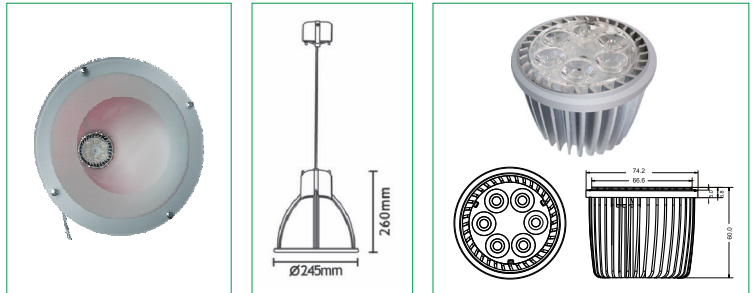
GF-8A1-LED

LED PENDANT LIGHT

Contemporary decorative LED pendant fixture.

- Housing: die-cast aluminium components.
- Lamp: LED 15W
- Color: CW, NW, WW
- Reflector: 8 " diameter duplex color or white glass, or spun anodized aluminium.

Broad variety of application, such as retail, hospitality, corporate, shopping mall, etc.



CHARACTERISTIC

- High brightness white LED, total luminous flux >800lm Free of ultraviolet and infrared radiation. Protect the illuminated object
- WarmWhite, CCT=2700K, 3000K, color rendering: 80, luminous flux >600lm
- Special heat dissipation structure
- Built-in SCR dimmable style available

ENERGY SAVING



- 15W replace PAR30 35W halogen lamp, each one can save 20W energy
- Assuming the working time is 14 hours per day, 365 days per year. 51100 hours per year
- 102.3kwh electricity could be save each year
- 4-8 replacements could be reduced

Reference	W	V	lm	t [h]	d max. [mm]	I max. [mm]
LEDPAR30/15W/2700K/M/DIM	15	220	15	600	50000	74.2 60
LEDPAR30/15W/6000K/M/DIM	15	220	25	800	50000	74.2 60



GF-18A3-LED

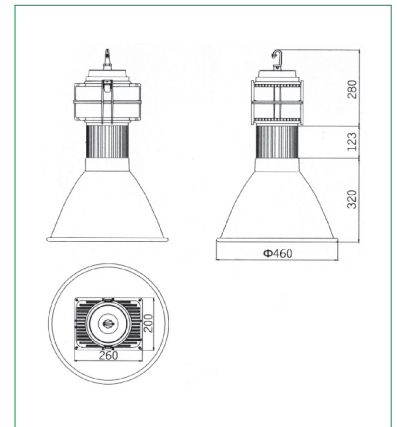
GF-18A3-LED

LED PENDANT LIGHT

Contemporary decorative LED pendant fixture.

- Housing: die-cast aluminium components.
- Lamp: LED 30W~100W
- Reflector: 18 " spun anodized aluminium.

Broad variety of application, such as retail, hospitality, corporate, shopping mall, etc.



SUITABLE FOR DIFFERENT SHADE



30~100	50~60	AC85~265 DC12/24	80~140	> 88%	IP65
Power(W)	Frequency(Hz)	Input Voltage(V)	Lum. Efficiency (lm/w)	Power Efficiency	
> 0.95	> 70	2700~ 10000	-40~55	 50,000	
Power factor	Color rendering index(Ra)	Color temperature(K)	Working surroundings(°C)	Usage life-span(hrs)	



GG102B-LED



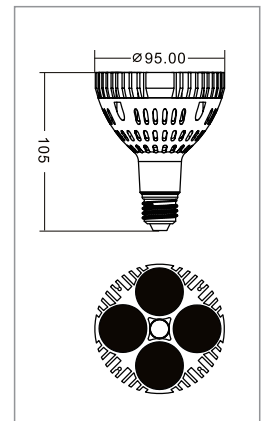
GG045-E17-LED



CHARACTERISTIC

- High brightness white LED, total luminous flux >2000lm, Free of ultraviolet and infrared radiation. Protect the illuminated object
- Lamp base: E27. Adopted Special constant current driver
- Special heat dissipation structure
- Remote constant current Driver
- Warranty: three years, luminous decay not more than 30%

ENERGY SAVING



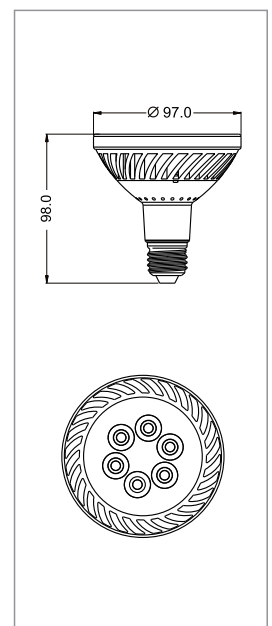
CHARACTERISTIC

- High brightness white LED, total luminous flux >750lm Free of ultraviolet and infrared radiation. Protect the illuminated object
- WarmWhite, CCT=2700K, 3000K, luminous flux >540lm
- Lamp base: E27
- Special heat dissipation structure
- Built-in SCR dimmable style available

ENERGY SAVING



- 15W replace PAR30 35W halogen lamp, each one can save 20W energy
- Assuming the working time is 14 hours per day, 365 days per year. 5110 hours per year
- 102.2kwh electricity could be save each year
- 4-8 replacements could be reduced



Reference	W	V	lm	t [h]	φ max. [mm]	l max. [mm]	
LEDPAR30/15W/2700K/M/DIM	15	220	15	540	50000	95	E27
LEDPAR30/15W/6000K/M/DIM	15	220	25	750	50000	95	E27

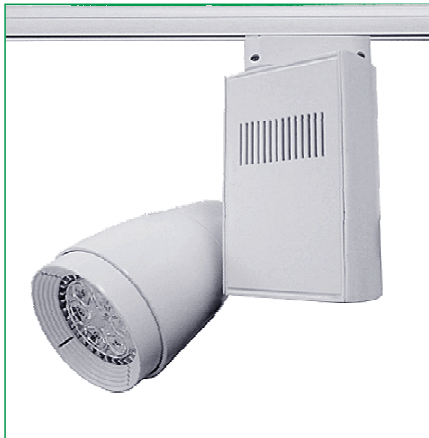


Light source	LED 15W MODULE 15W LED
Chip	PHILIPS Rebel/OSRAM Oslon
Chip Q'ty	6 pcs
Luminous Flux	600lm
Peak Intensity	2800cd -11500cd
Color Temperature	2700K
Color rendering index	>80
Constant current source	exterior
Drive current	670mA
Life	50000 hr
Description	Embedded Single loop track light, adjustable with vertical 90 Horizontal 360 , built in Constant current source, optional dimming lighting type.
Body material	Die-casting aluminum. surface powder coating painting
Constant current source	Built in 670mA. optional dimming type
IP	Ip20
Voltage	110~220V
Standard	Accordance with IEC International standard、GB7000.1-2007 National Standard



LED Spot Light

- Contemporary decorative LED spot fixture.
- Green product and energy saving, saving 50%
- Pure light color, reproduction is good
- Compact structure, beautiful, unique cooling, reduce the brightness degradation
- Constant current driver to ensure product performance and stability
- Housing: die-cast aluminium components.
- Broad variety of application, such as retail, hospitality, corporate, bars, hotel, office , shopping mall, etc.



GG073-E17-LED

Light source

LED 15W MODULE

15W LED

Chip PHILIPS Rebel/OSRAM Oslon

Chip Q'ty 6 pcs

Luminous Flux 600lm

Peak Intensity 2800cd -11500cd

Color Temperature 2700K

Color rendering index >80

Constant current source exterior

Drive current 670mA

Life 50000 hr

Description

Embedded Single loop track light, adjustable with vertical 90 Horizontal 360 , built in Constant current source, optional dimming lighting type.

Body material

Die-casting aluminum, surface powder coating painting

Constant current source

Built in 670mA, optional dimming type

IP

IP20

Voltage

110~220V

Standard

Accordance with IEC International standard、GB7000.1-2007 National Standard



EP203-20-1



- Input Voltage: 90~264V
- Input Frequency: 47~63 Hz
- Max Power: 20W
- Luminous Flux: 1200 lm
- Color Temperature: 4000~4500K
- Beam Angle: 100 degree
- Chips: EPISTAR45
- Size: ?115*160 mm
- Material: Aluminium
- Color: White

EP204-15-1



- Input Voltage: 90~264V
- Input Frequency: 47~63 Hz
- Max Power: 15W
- Luminous Flux: 900 lm
- Color Temperature: 4000~4500K
- Beam Angle: 100 degree
- Chips: EPISTAR45
- Size: ?115*160 mm
- Material: Aluminium
- Color: White

EP201-15-1



- Input Voltage: 90~264V
- Input Frequency: 47~63 Hz
- Max Power: 15 W
- Luminous Flux: 900 lm
- Color Temperature: 4000~4500K
- Beam Angle: 60 degree
- Chips: EPISTAR45
- Size: ?118*173 mm
- Material: Aluminium
- Color: White

EP202-30-1



- Input Voltage: 90~264V
- Input Frequency: 47~63 Hz
- Max Power: 30W
- Luminous Flux: 1800 lm
- Color Temperature: 4000~4500K
- Beam Angle: 100 degree
- Chips: EPISTAR45
- Size: ?115*275 mm
- Material: Aluminium
- Color: White

EP306-1-3



- Voltage: AC110V-250V
- Current: 350MA
- Power: 3x1W
- Light Color: Warm White, Cool White
- Beam Angle: 30 & 45
- Material: Aluminum
- Size: ϕ 80x50mm

EP307-1-5



- Voltage: AC110V-250V
- Current: 350MA
- Power: 5x1W
- Light Color: Warm White, Cool White
- Beam Angle: 30 & 45
- Material: Aluminum
- Size: ϕ 90x55mm

EP308-1-7



- Voltage: AC110V-250V
- Current: 350MA
- Power: 7x1W
- Light Color: Warm White, Cool White
- Beam Angle: 30 & 45
- Material: Aluminum
- Size: ϕ 100x60mm

EP309-1-9



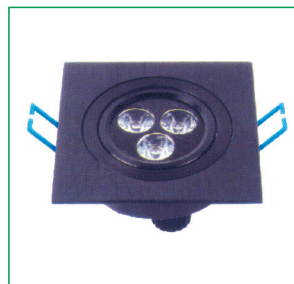
- Voltage: AC110V-250V
- Current: 350MA
- Power: 9x1W
- Light Color: Warm White, Cool White
- Beam Angle: 30 & 45
- Material: Aluminum
- Size: ϕ 120x80mm

EP310-1-12



- Voltage: AC110V-250V
- Current: 350MA
- Power: 12x1W
- Light Color: Warm White, Cool White
- Beam Angle: 30 & 45
- Material: Aluminum
- Size: ϕ 125x90mm

EP311-1-3



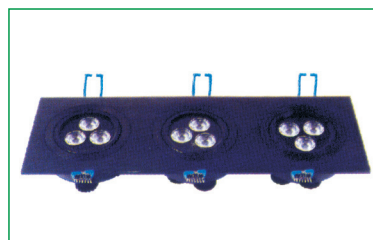
- Voltage: AC110V-250V
- Current: 350MA
- Power: 1x3x1W
- Light Color: Warm White, Cool White
- Beam Angle: 30 & 45
- Material: Aluminum
- Size: 90x90x50mm

EP312-1-3



- Voltage: AC110V-250V
- Current: 350MA
- Power: 2x3x1W
- Light Color: Warm White, Cool White
- Beam Angle: 30 & 45
- Material: Aluminum
- Size: 180x90x50mm

EP313-1-3



- Voltage: AC110V-250V
- Current: 350MA
- Power: 3x3x1W
- Light Color: Warm White, Cool White
- Beam Angle: 30 & 45
- Material: Aluminum
- Size: 270x90x50mm



EP601-7-1



- Voltage: 100-240V AC
- Power: 7W
- Luminous Flux: 420lm 5%
- Beam Angle: 120
- Mounting Hole: 71-81mm

EP602-10-1



- Voltage: 100-240V AC
- Power: 10W
- Luminous Flux: 600lm 5%
- Beam Angle: 120
- Mounting Hole: 74-102mm

EP603-20-1



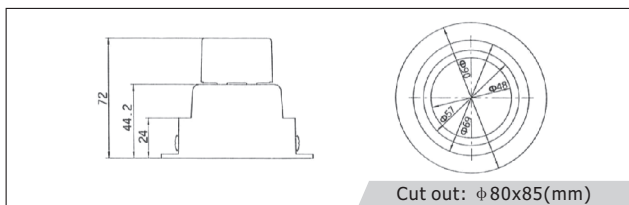
- Voltage: 100-240V AC
- Power: 20W
- Luminous Flux: 1440lm 5%
- Beam Angle: 120
- Mounting Hole: 118-141mm

EP604-20-1



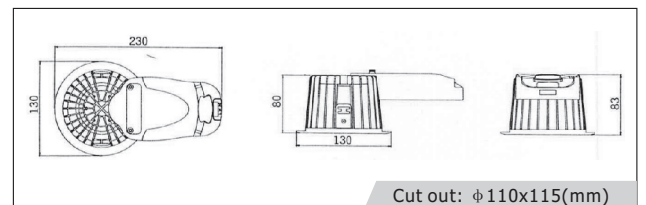
- Voltage: 100-240V AC
- Power: 20W
- Luminous Flux: 1400lm 5%
- Beam Angle: 120
- Mounting Hole: 160-175mm

EP604-4-1



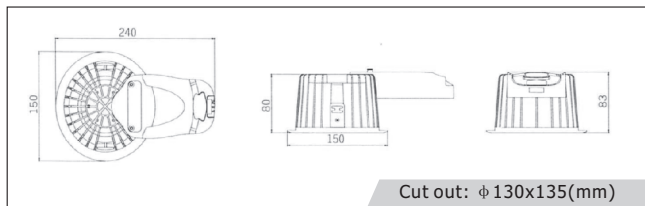
4	50~60	AC85~265 DC12/24	90~110	> 80%	IP20
Power(W)	Frequency(Hz)	Input Voltage(V)	Lum. Efficiency (lm/w)	Power Efficiency	
> 0.7	> 80	2700~ 7000	-40~40	50,000	
Power factor	Color rendering index(Ra)	Color temperature(K)	Working surroundings(°C)	Usage life-span(hrs)	

EP605-20



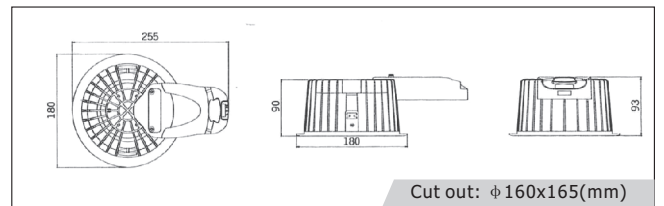
20	50~60	AC85~265 DC12/24	90~110	> 86%	IP20
Power(W)	Frequency(Hz)	Input Voltage(V)	Lum. Efficiency (lm/w)	Power Efficiency	
> 0.9	> 80	2700~ 7000	-40~40	50,000	
Power factor	Color rendering index(Ra)	Color temperature(K)	Working surroundings(°C)	Usage life-span(hrs)	

EP605-30



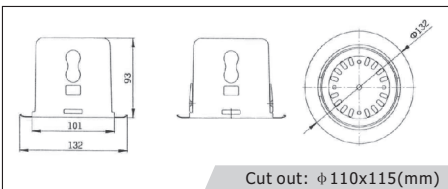
30 Power(W)	50~60 Frequency(Hz)	AC85~265 DC12/24 Input Voltage(V)	90~110 Lum. Efficiency (lm/w)	> 88% Power Efficiency	IP20
> 0.9 Power factor	> 80 Color rendering index(Ra)	2700~7000 Color temperature(K)	-40~40 Working surroundings(°C)	50,000 Usage life-span(hrs)	

EP605-40



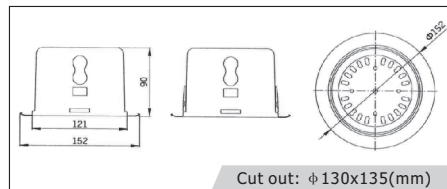
40 Power(W)	50~60 Frequency(Hz)	AC85~265 DC12/24 Input Voltage(V)	90~110 Lum. Efficiency (lm/w)	> 88% Power Efficiency	IP20
> 0.9 Power factor	> 80 Color rendering index(Ra)	2700~7000 Color temperature(K)	-40~40 Working surroundings(°C)	50,000 Usage life-span(hrs)	

EP801-8



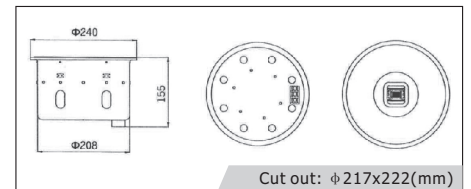
8 Power(W)	50~60 Frequency(Hz)	AC85~265 DC12/24 Input Voltage(V)	90~110 Lum. Efficiency (lm/w)		
> 80% Power Efficiency	IP20	> 0.7 Power factor	> 80 Color rendering index(Ra)		
2700~7000 Color temperature(K)	-40~40 Working surroundings(°C)	50,000 Usage life-span(hrs)			

EP802-16



16 Power(W)	50~60 Frequency(Hz)	AC85~265 DC12/24 Input Voltage(V)	90~110 Lum. Efficiency (lm/w)		
> 82% Power Efficiency	IP20	> 0.9 Power factor	> 80 Color rendering index(Ra)		
2700~7000 Color temperature(K)	-40~40 Working surroundings(°C)	50,000 Usage life-span(hrs)			

EP803-40



10~40 Power(W)	50~60 Frequency(Hz)	AC85~265 DC12/24 Input Voltage(V)	90~110 Lum. Efficiency (lm/w)		
> 88% Power Efficiency	IP20	> 0.9 Power factor	> 80 Color rendering index(Ra)		
2700~7000 Color temperature(K)	-40~40 Working surroundings(°C)	50,000 Usage life-span(hrs)			



GL-90836-LED



Voltage(V) : 220
 Power(W) : 6/10W
 Color Temp. (k) : 3000/4500/6000
 Beam Angle:12°/26°
 Material:Aluminium
 Cut out(mm)70
 Product Size(mm)79*72
 Net Weight(Kg) : 0.23

GL-90838-LED



Voltage(V) : 220
 Power(W) : 6/10W
 Color Temp. (k) : 3000/4500/6000
 Beam Angle:12°/26°
 Material:Aluminium
 Cut out(mm)70
 Product Size(mm)80*62
 Net Weight(Kg) : 0.23

GL-90839-LED



Voltage(V) : 220
 Power(W) : 6/10W
 Color Temp. (k) : 3000/4500/6000
 Beam Angle:12°/26°
 Material:Aluminium
 Cut out(mm)60
 Product Size(mm)70*75
 Net Weight(Kg) : 0.24

GL-90840-LED



Voltage(V) : 220
 Power(W) : 6/10W
 Color Temp. (k) : 3000/4500/6000
 Beam Angle:12°/26°
 Material:Aluminium
 Cut out(mm)60
 Product Size(mm)70*62
 Net Weight(Kg) : 0.19

GL-90842-LED



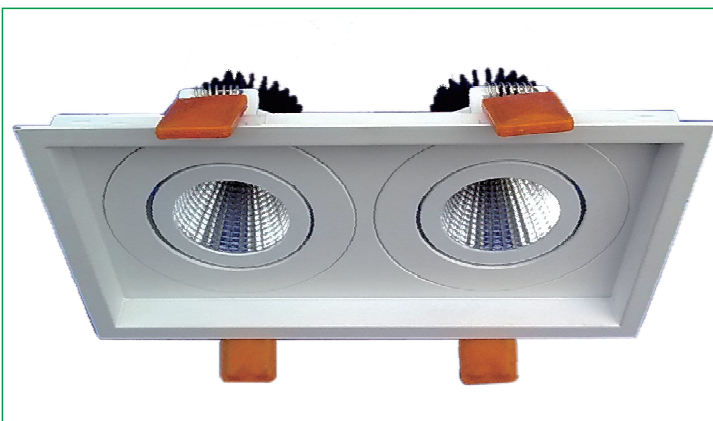
Voltage(V) : 220
 Power(W) : 6/10W
 Color Temp. (k) : 3000/4500/6000
 Beam Angle:12°/26°
 Material:Aluminium
 Cut out(mm)60
 Product Size(mm)70*72
 Net Weight(Kg) : 0.2

GL-90836C-K1-LED



Voltage(V) : 220
 Power(W) : 6/10W
 Color Temp. (k) : 3000/4500/6000
 Beam Angle:12°/26°
 Material:Aluminium
 Cut out(mm)100*100
 Product Size(mm)110*110*70
 Net Weight(Kg) : 0.3

GL-90836C-K2-LED



Voltage(V) : 220
 Power(W) : 6/10W
 Color Temp. (k) : 3000/4500/6000
 Beam Angle:12°/26°
 Material:Aluminium
 Cut out(mm)190*100
 Product Size(mm)200*110*70
 Net Weight(Kg) : 0.6

GG071-L-LED



Voltage(V) : 220
 Power(W) : 35W
 Lamp : LED
 Material:Aluminium
 Cut out(mm)166
 Product Size(mm)175*160
 Net Weight(Kg) : 0.8

GG073-L-LED



Voltage(V) : 220
 Power(W) : 15W
 Lamp : LED
 Material:Aluminium
 Cut out(mm)168
 Product Size(mm)175*130
 Net Weight(Kg) : 0.8

GG045-K1-LED



Voltage(V) : 220
 Power(W) : 35W
 Lamp : LED
 Material:Aluminium
 Cut out(mm)185*172
 Product Size(mm)186*186*165
 Net Weight(Kg) : 0.9

GG071W-A-LED



Voltage(V) : 220
 Power(W) : 35W
 Lamp : LED
 Material:Aluminium
 Product Size(mm)168*118*17
 Net Weight(Kg) : 0.6

GG041W-A-LED



Voltage(V) : 220
 Power(W) : 35W
 Lamp : LED
 Material:Aluminium
 Product Size(mm)158*147*190
 Net Weight(Kg) : 0.8

GG097-DE15-G12



Voltage(V) : 220
 Power(W) : 35/70W
 Lamp : CDM-T G12
 Material:Aluminium
 Beam Angle:24°/36°
 Product Size(mm)Φ116X186X300
 Net Weight(Kg) : 1.25

GG073-E10-LED



Voltage(V) : 220
 Power(W) : 15W
 Lamp : LED
 Material:Aluminium
 Product Size(mm)205*130*240
 Net Weight(Kg) : 1.23

GG042-E10-LED



Voltage(V) : 220
 Power(W) : 15W
 Lamp : LED
 Material:Aluminium
 Product Size(mm)215*130*240
 Net Weight(Kg) : 1.26



GL-90846-LED



Voltage(V) : 220
 Power(W) : 3W
 Lamp : LED
 Material:Aluminium
 Cut out(mm)105
 Product Size(mm)123*45
 Net Weight(Kg) : 0.18

GL-90847-LED



Voltage(V) : 220
 Power(W) : 7W
 Lamp : LED
 Material:Aluminium/Steel
 Cut out(mm)125
 Product Size(mm)146*45
 Net Weight(Kg) : 0.22

GG076-E39-LED



Voltage(V) : 220
 Power(W) : 20W
 Lamp : LED
 Material:Aluminium
 Net Weight(Kg) : 1.2

GL-90848-LED



Voltage(V) : 220
 Power(W) : 12W
 Lamp : LED
 Material:Aluminium
 Cut out(mm)95
 Product Size(mm)110*60.5
 Net Weight(Kg) : 0.3

GG089B-L-G8.5/R20



Voltage(V) : 220
 Power(W) : 35/70W
 Lamp : G8.5
 Material:Aluminium
 Beam Angle:24°
 Cut out(mm)135
 Product Size(mm)143*140
 Net Weight(Kg) : 0.47

GG089B-K2-G8.5*2



Voltage(V) : 220
 Power(W) : 35/70W
 Lamp : G8.5
 Material:Aluminium
 Beam Angle:24°
 Cut out(mm)300*160
 Product Size(mm)314*174*142
 Net Weight(Kg) : 1.33

GL-80832-K1-G8.5



Voltage(V) : 220
 Power(W) : 35/70W
 Lamp : G8.5
 Material:Aluminium
 Cut out(mm)160*160
 Product Size(mm)174*174*120
 Net Weight(Kg) : 0.81

GG106-L-G8.5



Voltage(V) : 220
 Power(W) : 35/70W
 Lamp : G8.5
 Material:Aluminium
 Beam Angle:12°/24°
 Cut out(mm)135
 Product Size(mm)143*165
 Net Weight(Kg) : 0.82

GG105W-C-GX10



Voltage(V) : 220
 Power(W) : 35W
 Lamp : GX10
 Material:Aluminium
 Product Size(mm)75*92*160
 Net Weight(Kg) : 0.41

GG105W-L-GX10



Voltage(V) : 220
 Power(W) : 35/70W
 Lamp : GX10
 Material:Aluminium
 Cut out(mm)135
 Product Size(mm)143*154.5
 Net Weight(Kg) : 0.58KG

GG105W-DE30-GX10



Voltage(V) : 220
 Power(W) : 35/70W
 Lamp : G8.5
 Material:Aluminium
 Product Size(mm)198*90*220
 Net Weight(Kg) : 0.82KG

GF-80832B-G8.5



Voltage(V) : 220
 Power(W) : 35/70W
 Lamp : CDM-TC G8.5
 Material:Aluminium
 Beam Angle:12°/24°
 Cut out(mm)135
 Product Size(mm)143*140
 Net Weight(Kg) : 0.6

GF-80832-G8.5



Voltage(V) : 220
 Power(W) : 35/70W
 Lamp : CDM-TC G8.5
 Material:Aluminium
 Beam Angle:12°/24°/36°
 Cut out(mm)135
 Product Size(mm)143*120
 Net Weight(Kg) : 0.57KG

CT1-8S-G12



Voltage(V) : 220
 Power(W) : 35/70W
 Lamp : G12
 Material:Aluminium
 Cut out(mm)200
 Product Size(mm)215*215
 Net Weight(Kg) : 1.06

GG073-LM-G8.5



Voltage(V) : 220
 Power(W) : 35/70W
 Lamp : G8.5
 Material:Aluminium
 Beam Angle:12°/24°
 Cut out(mm)165
 Product Size(mm)175*150
 Net Weight(Kg) : 1.0KG

GG071-L-G12



Voltage(V) : 220
 Power(W) : 35/70W
 Lamp : G12
 Material:Aluminium
 Beam Angle:24°
 Cut out(mm)166
 Product Size(mm)175*160
 Net Weight(Kg) : 0.85



GG042-LM-G8.5



Voltage(V) : 220
 Power(W) : 35/70W
 Lamp : G8.5
 Material:Aluminium
 Beam Angle:12°/24°
 Cut out(mm)168
 Product Size(mm)175*160
 Net Weight(Kg) : 1.1

E01 BOX



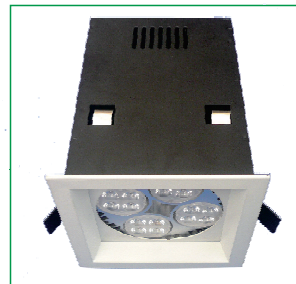
Material:Steel
 Product Size(mm)175*90*41
 Net Weight(Kg) : 0.55

GG073-KM2-G8.5-2



Voltage(V) : 220
 Power(W) : 35/70W
 Lamp : G8.5
 Material:Aluminium
 Beam Angle:12°/24°
 Cut out(mm)340*190
 Product Size(mm)358*195*210
 Net Weight(Kg) : 2.75

GFG0737-K1-E27



Voltage(V) : 220
 Power(W) : 35/70W
 Lamp : PAR30
 Material:Aluminium
 Cut out(mm)106*106
 Product Size(mm)120*120*175
 Net Weight(Kg) : 0.7

GF-90912-PLC



Voltage(V) : 220
 Power(W) : 35/70W
 Material:Aluminium
 Cut out(mm)130
 Product Size(mm)140*190
 Net Weight(Kg) : 0.35

GF90909-GU5.3



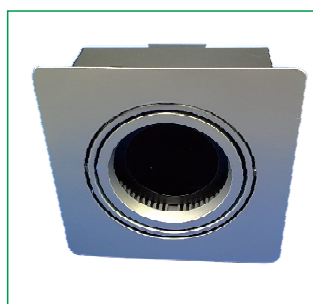
Voltage(V) : 220
 Power(W) : 20W
 Lamp : GU5.3
 Material:Aluminium
 Cut out(mm)78
 Product Size(mm)87*82
 Net Weight(Kg) : 1.9

GF-90911-GU5.3



Voltage(V) : 220
 Power(W) : 35/50W
 Lamp : MR16 GU5.3
 Material:Aluminium
 Beam Angle:24°
 Cut out(mm)Φ120
 Product Size(mm)125X115
 Net Weight(Kg) : 0.29

GF80835



Voltage(V) : 220
 Power(W) : 35W
 Lamp : AR111(led)
 Material:Aluminium/Steel
 Cut out(mm)178*178
 Product Size(mm)208*208*129
 Net Weight(Kg) : 0.9

GG105W-DE30-GX10



Voltage(V) : 220
 Power(W) : 35/70W
 Lamp : GX10
 Material:Aluminium
 Product Size(mm)198*90*220
 Net Weight(Kg) : 0.8

GG106W-DE30-G8.5



Voltage(V) : 220
 Power(W) : 35/70W
 Lamp : G8.5
 Material:Aluminium
 Beam Angle:24°/36°
 Product Size(mm)240*116*260
 Net Weight(Kg) : 1

GG059-DE30-E27



Voltage(V) : 220
 Power(W) : 35/70W
 Lamp : R20
 Material:Aluminium
 Product Size(mm)210*100*260
 Net Weight(Kg) : 0.9

GG087-DE30-G12



Voltage(V) : 220
 Power(W) : 35/70W
 Lamp : G12
 Material:Aluminium
 Beam Angle:24°
 Product Size(mm):220*115*300
 Net Weight(Kg) : 1.03

GG097-DE15-G12



Voltage(V) : 220
 Power(W) : 35/70W
 Lamp : G12
 Material:Aluminium
 Beam Angle:24°
 Product Size(mm)240*116*280
 Net Weight(Kg) : 0.98

GG108W-A-LED-15W



Voltage(V) : 220
 Power(W) : 15W
 Lamp : LED
 Material:Aluminium
 Product Size(mm)275*120*300
 Net Weight(Kg) : 1.33

GG083W-DE15-G8.5



Voltage(V) : 220
 Power(W) : 35/70W
 Lamp : G8.5
 Material:Aluminium
 Beam Angle:24°/36°
 Product Size(mm)200*120*280
 Net Weight(Kg) : 1.28

GG041W-DE33-G12



Voltage(V) : 220
 Power(W) : 35/70W
 Lamp : G12
 Material:Aluminium
 Beam Angle:24°/36°
 Product Size(mm)260*150*300
 Net Weight(Kg) : 1.63

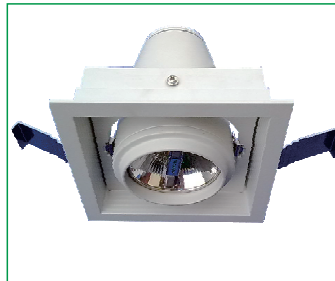


GG042W-DE23-G8.5



Voltage(V) : 220
Power(W) : 35/70W
Lamp : G8.5
Material:Aluminium
Beam Angle:12°/24°
Product Size(mm)270*125*260
Net Weight(Kg) : 1.46

GG059-K1-E27



Voltage(V) : 220
Power(W) : 35/70W
Lamp : PAR20(LED)
Material:Aluminium
Product Size(mm)143*143*132
Net Weight(Kg) : 0.72

GL-90850-LED



Voltage(V) : 220
Power(W) : 10W
Lamp : LED
Material:Aluminium
Cut out(mm)75
Product Size(mm)85*115
Net Weight(Kg) : 0.2

GL-90849-LED



Voltage(V) : 220
Power(W) : 10W
Lamp : LED
Material:Aluminium
Cut out(mm)108
Product Size(mm)118*115
Net Weight(Kg) : 0.36

销售公司:

杰鑫国际集团（香港）有限公司

SALES OFFICE

EPAMS INTERNATIONAL GROUP CO.,LTD

1405.NO.36 BLDG,JINBI NEW CITY, SHICHA ROAD,

BAIYUN DISTRICT GUANGZHOU,510430,CHINA

生产基地:

广州市格嵘格照明电器有限公司

广州市白云区石井镇鸦岗村鸦岗工业区

FACTORY BASE:

GFG LIGHTING MANUFACTORY CO.,LTD

YAGANG INDUSTRIAL ZONE,SHIJING,BAIYUN DISTRICT,GUANGZHOU

TEL:0086-20-86001368

FAX:0086-20-86007709

E-MAIL:sales@gfglighting.com

Http://www.gfglighting.com